

Table 3.30. Effect of base on the detection parameters of amlodipine, atorvastatin, and glimepiride

Parameter	Amlodipine	Glimepiride	Atrovastatin
Area	204181	241560	215518
RSD%	0.01	0.23	0.21
Theoretical plates	8037	9187	8703
Asymmetry	1.19	1.11	1.11
Resolution	3.79	5.48	5.54

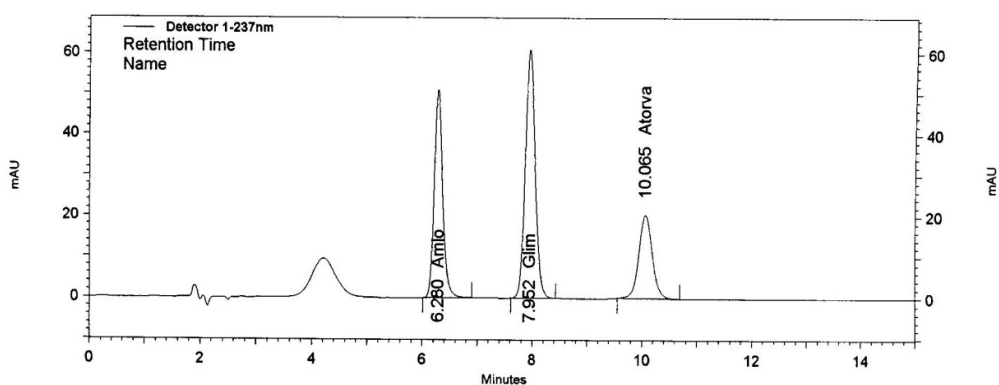


Figure 3.21. Chromatogram of amlodipine, glimepiride, and atorvastatin following the addition of acid

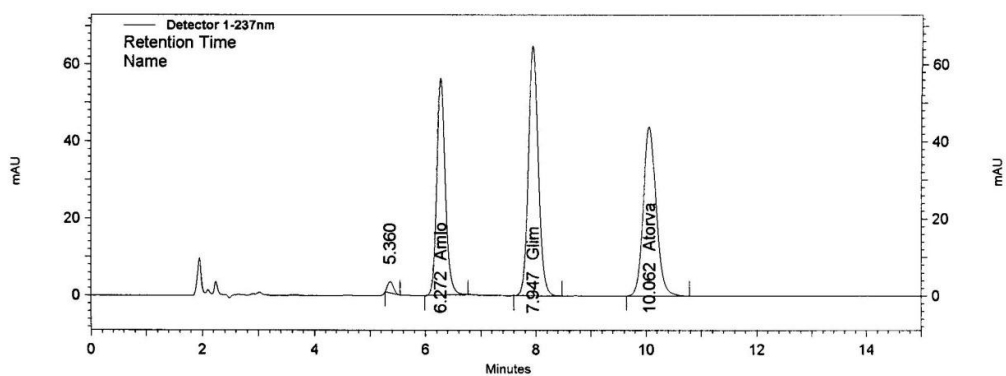


Figure 3.22. Chromatogram of amlodipine, glimepiride, and atorvastatin following the addition of base